



LOUISIANA DEPARTMENT OF PUBLIC SAFETY & CORRECTIONS
PUBLIC SAFETY SERVICES



H. "BUTCH" BROWNING, JR.
STATE FIRE MARSHAL

OFFICE OF STATE FIRE MARSHAL



UPDATED May 14, 2020

The Office of State Fire Marshal is providing you with this update in conjunction with the Office of the Governor and the Louisiana Department of Health to keep you up-to-date with additional information and/or changes as it becomes available during our battle with COVID-19. These notifications are issued automatically and immediately to those who sign up through "OpenSafely" (<https://opensafely.la.gov/>).

Every attempt is being made to highlight critical changes that have occurred since the previously published notification for your convenience. However, please read through this entire document in context as these changes do not stand on their own and all of the additional general information and clarifications made may not be highlighted.

Preface:

This Phasing Plan applies to those beauty shops, salons, and barber shops that have been affected during the COVID-19 stay-at-home order. Essential (critical) infrastructure businesses are not further restricted by these new guidelines and may continue to operate under the current guidelines that are applicable to the specific business. Refer to: https://gov.louisiana.gov/assets/docs/covid/Essential-Infrastructure_fact-sheet.pdf for specific information regarding critical infrastructure businesses.

COVID-19 is a highly contagious and deadly disease. The fundamental concept of this phased opening plan is to slowly open businesses at reduced occupant capacities that will allow for social distancing and circulation without encroaching upon others. Everyone's cooperation is critical to the success towards defeating this disease and revitalizing our economy.

Phase 1 - Beauty Shops, Salons, and Barber Shops

START DATE: May 15, 2020

Beauty Shops, Salons, and Barber Shops must adhere to strict mitigation standards and social distancing measures to prevent the spread of COVID-19. When possible, maintain at least 6 feet of separation from other individuals not within the same household. In addition, measures such as face covering, hand hygiene, cough etiquette, cleanliness, and sanitation should be rigorously practiced. **Individuals 65 years or older, people of all ages with poor control of medical issues like high blood pressure, heart disease, obesity, or a weakened immune system are at a higher risk for getting very sick or dying from COVID-**

8181 Independence Blvd. ♦ Baton Rouge, LA 70806 ♦ 1.800.256.5452 ♦ 225.925.4911 ♦ www.lasfm.org

19 and should strictly adhere to all CDC guidelines, and are encouraged to stay at home as much as possible. The specific requirements and guidelines for this service industry during this Phase are listed below. These requirements and guidelines supplement and do not replace any directives or guidance provided by other state agencies, boards and commissions, or other authorities having jurisdiction. Where conflicts occur, the stricter of the requirements will apply.

Limitations:

- The facility must meet all current licensing requirements of the Louisiana State Board of Cosmetology or the Board of Barber Examiners.

Occupant Capacity and Building Safety Rules:

The maximum building capacity during the **Phase 1** period is limited to 25% of the normal established capacity and is subject to limitations by the social distancing requirements of 6 feet as outlined below. Please note that capacity restrictions should be applied down to the individual room, not just overall facilities:

- Maximum capacity to achieve 25% will be based upon 1 person per 110 square feet of gross area, or 25% of the posted capacity by order of the State Fire Marshal.
 - Note: If your building is below 110 square feet, one employee and one customer is allowed in the building.
- Chairs shall be placed 6 feet apart measured from the chair edges where movement between chairs is not necessary;
- Where movement is necessary between chairs, the chairs shall be spaced 8 feet from chair edges.
- Interior waiting areas shall remain closed. Waiting may be provided outside of the facility while following social distancing guidelines or persons shall wait in cars. Appointments should be strongly encouraged.
- Avoid gatherings in the building while entering, exiting, or moving about.

Checklist for Management

- ☒ Actively enforce the capacity and social distancing requirements and manage the customers' movements.
- ☒ Ensure the exterior waiting areas are not blocked.
- ☒ Maintain social distancing requirements explained in this document.
- ☒ EPA recommends that building owners and managers take proactive steps to protect public health by minimizing water stagnation during closures and taking action to address building water quality prior to reopening: <https://www.epa.gov/coronavirus/information-maintaining-or-restoring-water-quality-buildings-low-or-no-use>



LOUISIANA DEPARTMENT OF PUBLIC SAFETY & CORRECTIONS
PUBLIC SAFETY SERVICES

OFFICE OF STATE FIRE MARSHAL



H. "BUTCH" BROWNING, JR.
STATE FIRE MARSHAL

Checklist for All Staff

- ☒ Check for fever or respiratory symptoms daily.
- ☒ Screen customers upon entry to confirm that there are no symptoms.
- ☒ Keep at least 6 feet from other employees and customers.
- ☒ Wear face coverings.
- ☒ Wash your hands often.
- ☒ Wear gloves when touching products, goods, money, and credit cards. When gloves are worn:
 - Hands should be washed before putting gloves on and after removing gloves.
 - Gloves should be changed often, changed between tasks, changed when they are obviously soiled, and changed after each interaction with a new individual.
- ☒ If gloves are not available, use hand sanitizer between each task and after customer check-out.
- ☒ Clean and sanitize items you touch often.
- ☒ Clean and sanitize tools, chairs and counters.
- ☒ Clean and sanitize surfaces that customers touch often, like doorknobs, handles, plates, light switches, countertops, refrigerator and freeze door handles, etc. Current evidence suggests that SARS-CoV-2 may remain viable for hours to days on surfaces made from a variety of materials. Cleaning of visibly dirty surfaces, as well as high-touch surfaces, followed by disinfection is a best practice measure for prevention of COVID-19 and other viral respiratory illnesses in community settings. Follow the CDC guidance for proper cleaning and disinfecting. <https://www.cdc.gov/coronavirus/2019-ncov/community/organizations/cleaning-disinfection.html>
- ☒ Clean and disinfect the restrooms regularly.
- ☒ Do not touch the customers, except as allowed for and provided for herein.

Face Covering Guidance

Refer to Louisiana Department of Health guidance here:

<http://ldh.la.gov/assets/oph/Coronavirus/resources/CDC-DIY-cloth-face-covering-instructions.pdf>

Steps for Cleaning Areas and Other Items

1. First, clean the area or item with soap and water or another detergent if it is dirty.
2. Then, use disinfectant.
 - If possible, use [EPA-registered household disinfectant](#).
 - Follow the instructions on the label to ensure safe and effective use of the product.

Many products recommend:

- Keeping surfaces wet for a period of time (see product label).
- Precautions such as wearing gloves and making sure you have good ventilation during use of the product.

Diluted household bleach solutions may also be used if appropriate for the surface.

- Check the label to see if your bleach is intended for disinfection and ensure the product is not past its expiration date. Some bleaches, such as those designed for safe use on colored clothing or for whitening, may not be suitable for disinfection.
- Unexpired household bleach will be effective against coronaviruses when properly diluted.
- Follow manufacturer's instructions for application and proper ventilation. Never mix household bleach with ammonia or any other cleanser.
- Leave the solution on the surface for at least 1 minute.

To make a bleach solution, mix:

- 5 tablespoons (1/3rd cup) of bleach per gallon of water; or
- 4 teaspoons of bleach per quart of water.

Alcohol solutions with at least 70% alcohol may also be used.

The CDC offers this additional guidance for cleaning: <https://www.cdc.gov/coronavirus/2019-ncov/community/organizations/cleaning-disinfection.html>



LOUISIANA DEPARTMENT OF PUBLIC SAFETY & CORRECTIONS
PUBLIC SAFETY SERVICES

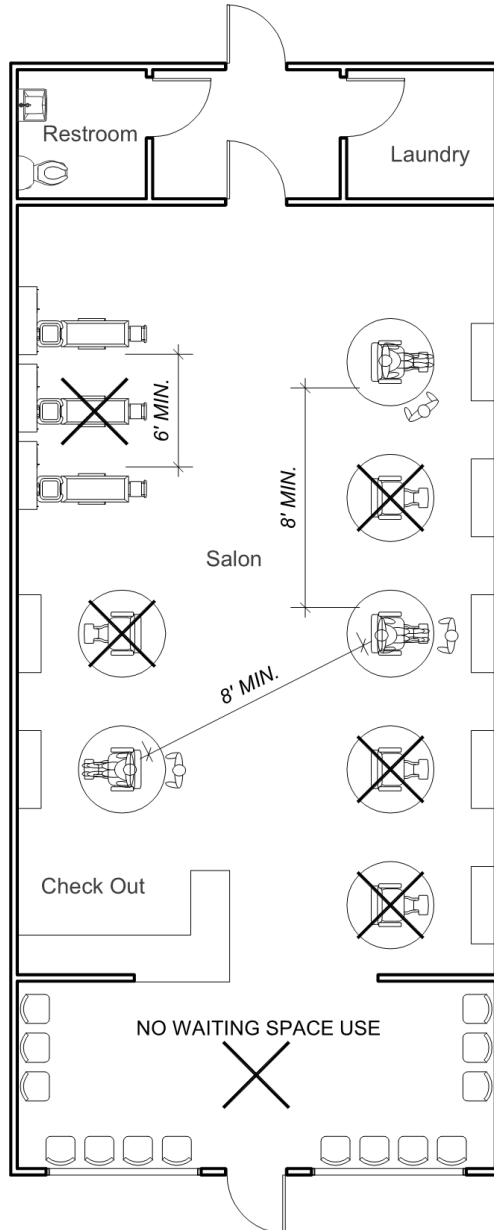
OFFICE OF STATE FIRE MARSHAL



H. "BUTCH" BROWNING, JR.
STATE FIRE MARSHAL

Sample Seating Layout

Normal maximum capacity = 24, Phase 1 maximum capacity = 6 (25%)



Referenced Documents:

- ☐ Essential (Critical Infrastructure) Services remain operational with guidelines in place.
See: https://gov.louisiana.gov/assets/docs/covid/Essential-Infrastructure_fact-sheet.pdf

